

TARANAKI

like no other

MUSEUMS AND GALLERIES

7th edition



[taranaki.co.nz/visit](https://www.taranaki.co.nz/visit)

NAU MAI, HAERE MAI



For more information
about the region
like no other, see
taranaki.co.nz/visit

From the mythical volcanic cone of Taranaki Maunga to the ancient pā sites that mark the region's hilltops, to the innovation of its residents, Taranaki is home to countless great stories, which are best told through its many museums and galleries. As you work your way around our museums and galleries, you'll discover that the people of Taranaki are passionate not only about collecting, but about sharing the region's history and its many fascinating stories.



NEW PLYMOUTH DISTRICT

With a diverse range of outstanding cafes and restaurants, fringed by the coastal walkway and sparkly seascape, New Plymouth offers a lively cosmopolitan base for exploring the many museums and galleries of North Taranaki. For more information including opening hours, entry fees, addresses and websites, see taranaki.co.nz/visit.



1. The Govett-Brewster Art Gallery/Len Lye Centre

This leading New Zealand contemporary art gallery presents three exhibitions annually, focusing on the art of New Zealand and countries of the Pacific Rim.



2. Puke Ariki

Promoting the heritage of Taranaki with exciting themed temporary exhibitions plus four permanent exhibitions exploring the region's past, present and future – telling the stories of the people and the region through displays, technology, and multi-media.



3. The Gables Colonial Hospital North Taranaki Art Society (Inc) Gallery

Located within the historic 1848-built Gables Colonial Hospital, the Gallery offers an ever-changing programme.



4. Lumen Studios & Gallery

An artist-run space based at the old Cheese Factory in Tataraimaka. Resident artists include Teresa Goodin and Alice Cowdrey while also showcasing artists and makers from Taranaki.



5. The White Sail Gallery

This gallery features the work of local and national artists, potters and sculptors.



6. Gover St Gallery

An independent, not-for-profit community art gallery showcasing over 120 artists. The gallery highlights the wide and varied work Taranaki artists have to offer.



7. The Collaboration

A gallery, design and workshop space. Curated exhibitions are hosted every six weeks and displays from local and NZ businesses are regularly rotated.



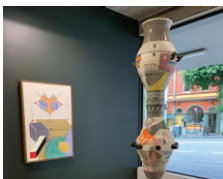
8. Fun Ho! National Toy Museum

View 3,000 toys on display along with interactive activities and the chance to see a toy being made by the toymaker. You may even get to take part in the process!



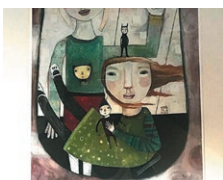
9. Kina NZ Design + Art Space

This contemporary design store features glass art, ceramics, jewellery, sculpture, prints, paintings and various homewares. Each month Kina's gallery features a new exhibition of work by established and emerging artists.



10. Kingsroy

Dedicated to showcasing New Zealand artists there is a showroom for visitors to interact with art, objects and jewellery.



11. Koru on Devon Gallery

Features a range of exhibition spaces showcasing recent works by leading local artists. With a monthly changeout, the gallery features solo exhibitions and group shows including guest artists from across New Zealand.



12. Vicarage Pottery

A potters' collective within the historic Te Henui Vicarage building. Find fabulous pieces ranging from artistic to domestic ware and a wide variety of clay forms including earthenware, stoneware and porcelain.



13. The Art Loft

Head through the small doorway next to the ANZ ATM and up the creaky stairs to be surprised by the large airy room reminiscent of a New York loft, the perfect space to enjoy some art from painters, photographers, and printmakers. Exhibitions also include pottery, sculpture and works by other artists.

14. TATATM (Taranaki Aviation Transport and Technology Museum)

Preserving Taranaki's past for the enjoyment of future generations, providing hands-on fun and learning for the whole family including early radio and recording techniques, a telephone exchange and much more.

15. Hillsborough Holden Museum

A private collection of Holden cars and memorabilia, including meticulously restored early Holdens through to late model cars. Onsite is also a mini-putt golf course, luge and cafe.

16. TSB Bank Bowls New Zealand Museum

This is the only registered museum in the world dedicated to the game of bowls. Discover a wealth of bowling memorabilia from over 48 countries.

17. Maketawa Museum

A collection of John Deere tractors from 1935 to 1959. The still growing collection started from a passion for John Deere and is one of the bigger collections in New Zealand.

18. Mōkau Museum

This museum has amassed a remarkable collection of items spanning the natural history of North Taranaki, both Māori and Pākehā settlement, and the area's industries.

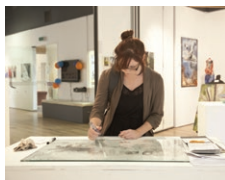
19. New Plymouth street and public art

New Plymouth is a dynamic destination when it comes to street and public art. In any direction around town, you'll find graffiti works by well-known local, national and international artists, while public sculptures adorn the central city and New Plymouth Coastal Walkway, giving a glimpse into the city's rich arts and culture scene.



STRATFORD DISTRICT

Located in the heart of Taranaki, the town of Stratford is indelibly linked to its namesake Stratford-upon-Avon, famous for being the home of William Shakespeare. The works of that town's favourite son are immortalised in Stratford through street names, parks and the distinctive Glocksenspiel Clock Tower, which performs passages from the Great Bard's Romeo and Juliet at 10am, 1pm, 3pm and 7pm daily.



20. Percy Thomson Gallery

The award-winning gallery provides a diverse programme of ever-changing exhibitions of national and international touring shows, regional exhibitions and work by both established and emerging local artists and community groups.



21. Taranaki Pioneer Village

A unique opportunity to experience an outdoor museum presenting the life of Taranaki pioneers in the 19th and 20th centuries. There is also a railway line encircling the property and an onsite café.

22. Percy's Place

The boutique art shop of the Percy Thomson Gallery features a revolving selection of new work from Taranaki artists available for purchase.

23. Fenton Street Art Collective

This gallery is into ART in a big way: the art of coffee; the art of art and the art of distilling. The owners have created a gallery space that offers great coffee and boutique small batch gin.

SOUTH TARANAKI DISTRICT

The district is home to several high standard museums and galleries including the remarkable Tawhiti Museum and Traders & Whalers, regarded as one of the best private museum in the country. The many towns of South Taranaki offer cozy cafés and a delightfully eclectic array of shops, studios, parks and gardens in which to re-energise after a day of exploring the district's museums and galleries.



24. Aotea Utanganui Museum of South Taranaki

This museum is home to significant collections including the earliest dated wooden artefacts found in New Zealand. The Museum plays an active role within the community through the preservation of its heritage collections.



25. Tawhiti Museum and Traders & Whalers

Widely acclaimed as one of the most innovative museums in New Zealand, Tawhiti Museum uses life-size exhibits and scale models to capture the past in a series of super-realistic displays. Adjacent is Traders & Whalers a unique and innovative historical canal boat ride through the coastal life of Taranaki from the 1820s to the 1840s.

South Taranaki continued



26. Lysaght Watt Gallery

Hāwera's community art gallery presents curated exhibitions that change monthly showcasing a range of works in a wide variety of mediums.



27. The Village Gallery

With nearly 100 members, the work on display is always diverse and interesting featuring paintings, pottery, fibre art and sculpture.



28. Quirky Fox

Showcasing established and emerging creative talents, Quirky Fox invites both local and international artists to be part of its carefully curated range.



29. from out of the blue studio gallery

Hand weaving, tapestry weaving, knitting, slow stitching, hand papermaking and natural dying can be found here and the gallery hosts resident artists and themed exhibitions which change every six weeks.



30. The Emporium

A gallery and gift shop representing a collective of artists and creatives mostly from around Taranaki with a range of techniques and mediums.

31. KD's Elvis Presley Private Museum

This collection of Elvis memorabilia is regarded as one of the largest in Australasia, with the collection covering every surface of the museum.

32. Waverley Glass Art Studio

The gallery shows a wide variety of original glass and mixed media works by the owners and also features cortene steel and stone sculptures in the adjacent garden.

33. Mark Bellringer Photography

Documenting the landscape and world around him makes up a large part of Mark's professional photographic work. He finds interesting points of view in the ordinary everyday that surrounds us. Together with partner Barbara Valintine they run an eclectic design store in a historical BNZ building in Eltham.

34. Forbes & Flay

Contemporary botanical art and installation with an interest in the natural and botanical history of NZ and the South Pacific.

35. The Brown Bach

Unique artisan pieces for the home and garden made from collected waste materials.

36. Gallery Pātea

Featuring curated exhibitions by local and national artists. Clay and stone resources found within the area give extra context to the works while artists also provide framed and unframed artworks.

37. Ashley Park Memory Lane Museum

The museum holds a number of displays including collections of quirky teapots, bizarre salt and pepper shakers, royal commemorative porcelain, a themed grocer's shop from the 1920-30s and a toy shop display.

38. The Bank Room

The gallery features original artwork plus occasional homewares by monthly guest artists and in-house printmaker MB Stoneman.

39. Historic Cape Light & Museum

This museum features a replica lighthouse housing the 1850s Fresnel Prismatic Light that powered the Cape Egmont Lighthouse until 1999. The Cape Egmont Lighthouse can be seen at the end of Cape, Road Surf Highway.

40. Pihama Lavender

The gallery sells products solely sourced in Taranaki and the owner is an artist who specialises in oil and pastel.

41. Toi Manaia

A collective of Māori artists, Toi Manaia supports beginner artists as well as internationally recognised artists.

TARANAKI PUBLIC ART

Taranaki is well known for its public art works, such as the Wind Wand by Len Lye (42), pictured above. Here are some pieces of public art to look out for:



NEW PLYMOUTH

43. Paritutu Community Group Carving by Greg Keenan



44. Big Wave Territory
by John Reynolds



45. Tukotahi
by Filipe Tohi



46. Aotearoa
by Michael Smither



47. Halamoana
by Filipe Tohi



48. Te Pou Tetake - The Fitzroy Pole by Henare Toka



WAITARA

49. West Quay Carvings
by Rangi Bailey



STRATFORD

50. Shakespeare by Roger Peters



DAWSON FALLS

51. Children of the Earth

by Albert Tamati



ELTHAM

52. Eltham Arty Loo

by local artists



PĀTEA

53. Aotea Waka



54. Garden of Tutunui

by Kim Jarrett



WAVERLEY

55. Fusion

by Jimi Walsh



HĀWERA

56. Campbell Lane is adorned with several large paintings by South Taranaki artists.



57. Mural by Lotte Hawley

58. Children of the Earth Sculpture

by Reece Rongonui



59. Wings of Korimako

by Steve Molloy



ŌPUNAKE

60. There are many murals in Eltham and Ōpunakē from historic vistas to beautiful landscapes.

OPEN BY APPOINTMENT

A selection of museums and galleries that are open by appointment only. Contact details can be found at taranaki.co.nz/visit. Ensure to phone ahead to make a booking.

61. TSB Bank Museum

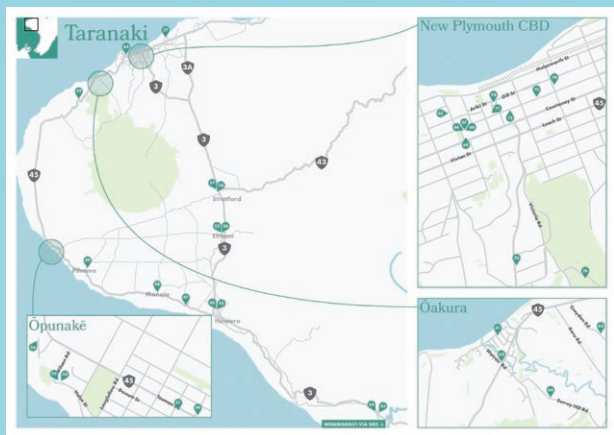
Exhibits include original documents, portraiture, and machinery.

62. Hurworth Cottage

Charming and tranquil, with an incredible history.

63. Koru on Koru Gallery

An art destination within the historic garden home of well-known photographer Fay Looney MNZM.



The Coastal Arts Trail is an easy self-drive itinerary of the art galleries, museums, and open studios throughout the culturally rich regions of Taranaki, Whanganui and Manawatū, celebrating their arts, heritage, and inspirational natural beauty. Check out the website coastalartstrail.nz for more information.

64. Johnston Collections

Music phonographs, gramophones and music boxes to fire engines and fully restored dodge cars.

65. Hazelwood Horse Ornament Collection

A horse lover's paradise, with an enormous array of equine memorabilia.

66. Taranaki Country Music Hall of Fame

Based in Manaia, the former Band Hall now hosts a vast array of country music memorabilia that will captivate the country music enthusiast.

67. Woolshed Museum

A huge array of pioneer and natural history objects.

68. Dennys Fire Model & Fire Service Memorabilia Room

Featuring over 2,500 fire brigade diecasts models, badges, uniforms and fire memorabilia.

TARANAKI ARTS EVENTS

Taranaki has a vibrant events calendar, with something for everyone. Restrictions as a result of COVID-19 may impact on these events listed. For the most up-to-date information go to taranaki.co.nz.

NZ Tattoo and Art Festival – November

nztattooart.com

Ōakura Arts Trail

– Oct/Nov

oakuraarts.co.nz

Taranaki Arts Festivals – Twice per year

taft.co.nz

Taranaki Arts Trail

– Oct/Nov

taranakiartstrail.co.nz

South Taranaki Arts Fest – Biennially – October to November

artsfestst.co.nz

Te Kupenga International Stone Sculpture

**Symposium – Every
second year in January**

tekupenga.com

WOMAD – March

womad.co.nz

MUSEUMS AND GALLERIES

AOTEA UTANGANUI MUSEUM OF SOUTH TARANAKI



Visitor information, maps, souvenirs, internet facilities, and accommodation, activity and transport bookings for Taranaki and all of New Zealand are available from:

NEW PLYMOUTH i-SITE VISITOR CENTRE **SITE**

Puke Ariki, 1 Ariki Street, New Plymouth

Email: info@newplymouth.govt.nz **Phone:** 0800 639 759

Hours: Monday–Sunday 10.00am–5.00pm

STRATFORD i-SITE VISITOR CENTRE **SITE**

Prospero Place & Miranda Street, Stratford

Email: info@stratford.govt.nz **Phone:** 06 765 6708 or 0800 765 6708

Hours: Monday–Friday 8.30am–5.00pm.

Saturday 9–1pm, closed Sundays and Public Holidays

SOUTH TARANAKI i-SITE VISITOR CENTRE **SITE**

55 High Street, Hāwera

Email: visitorinfo@stdc.govt.nz **Phone:** 06 278 8599

Hours: Monday–Friday 8.30am–5.00pm.

Weekends and public holidays 10.00am–3.00pm.

All i-SITES are closed Christmas Day.

For more information, head to taranaki.co.nz/visit

venture
TARANAKI

Te Puna Umanga